

10029 Kaleidoskop "Wilde Tiere"

EN 71 -1/-2/-3





万田检测技术服务有限公司  
**Vantin Testing Technology Service Co.,Ltd**

**Technical Documentation of**  
**Kaleidoscope**

**Doc. Number** : ZL20201202025  
**Up Date** : 2020-12-2  
**Prepared By** : Jenny  
**Approved BY** : Jenny  
**Reviser** : June chen



万田检测技术服务有限公司

**Vantin Testing Technology Service Co.,Ltd**

Doc No: ZL20201202025

Date : 2020-12-2

Page 1 of 1

## Document Control Information

Document Details	
Document Name	Technical Documentation Of Kaleidoscope
Purpose of Document	Keep products safe and compliance with 2009/84/EC Technical Documentation requirements
Prepared By	Jenny
Date of First Draft	2020-12-2
Date Approved	2020-12-3
Approved by	Jenny
Next Scheduled Review Date	

## Table of Contents

No.	Content	ANNEX	Pages
1	Description of design and manufacture	--	3-6
2	Bill of Materials	--	6-7
3	Materials Safety Data Sheets		8
4	MSDS of PP	ANNEX I	9-13
5	MSDS of PS		13-16
6	MSDS of EVA		16-19
7	Safety Assessments Reports	ANNEX II	20-27
8	Conformity assessment procedure	ANNEX III	28
9	EC declaration of conformity	ANNEX IV	29
10	Address of places of manufacture and storage	--	8
11	Documents submitted to notified body	--	8
12	Test report	ANNEX V	
13	EC Type examination	--	8

## 1. Detailed description of design and manufacture

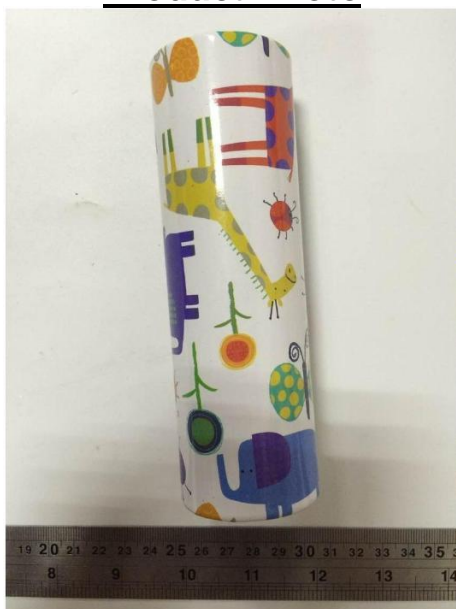
Item No. : TE11100199、631、10029

Product Name : Kaleidoscope

Product Size: 5cm×5cm×14.5cm

Detail  
Description : Kaleidoscope

### Product Photo



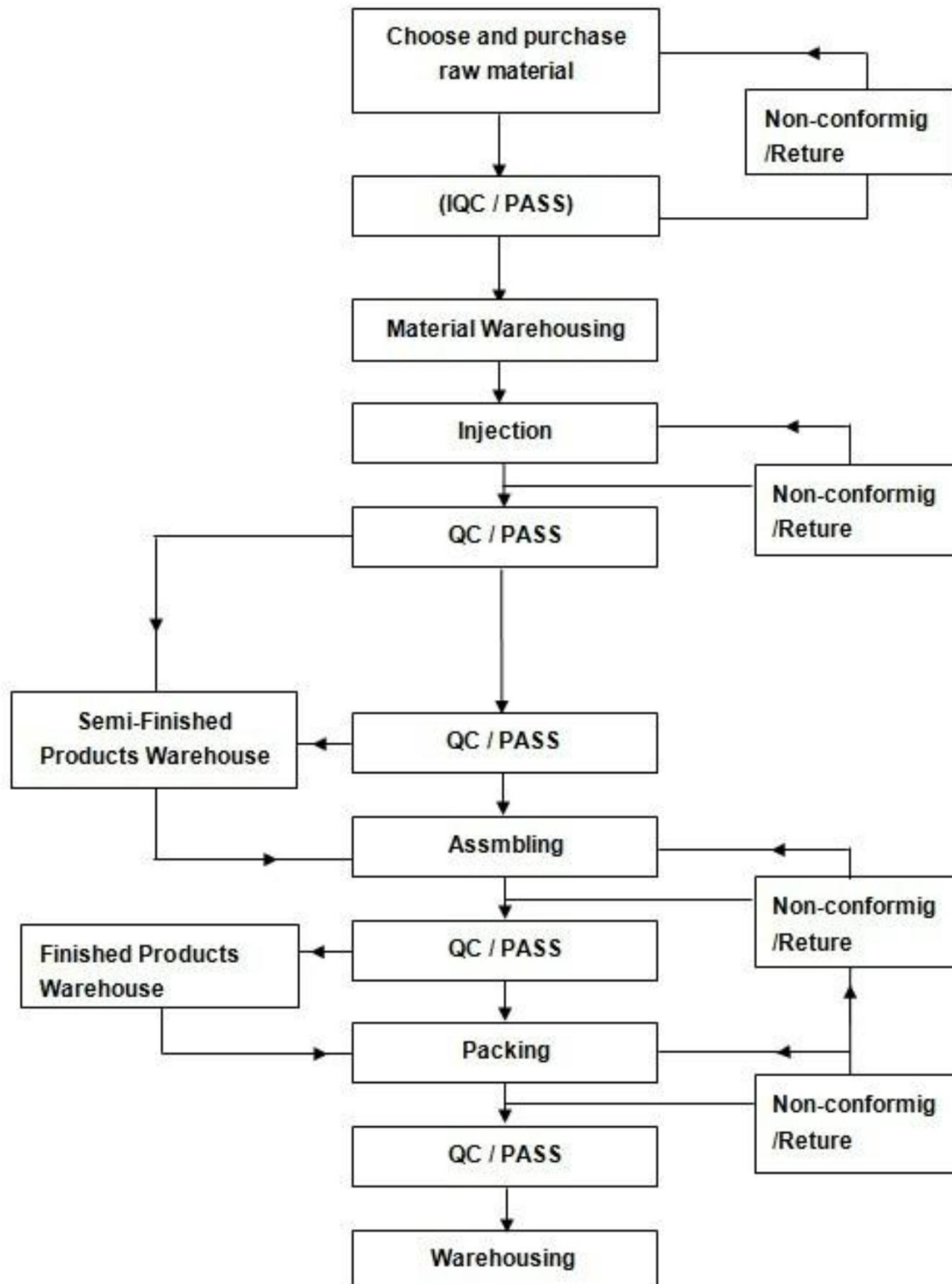
**Packaging Information :**

**Packaging Photo**





**Flow Chart for product manufactured:**



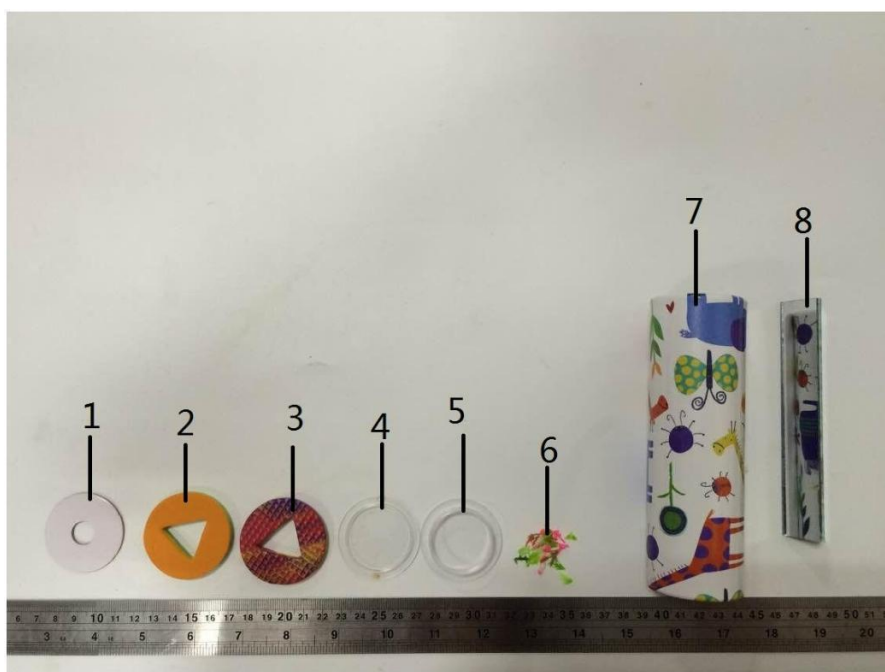
## 2. Bill of Materials(BOM)

<b>Product Name:</b>		Kaleidoscope						
<b>Item No.:</b>		TE11100199、631、10029						
Part		NO. used		Material, Substance, Component	Color	CAS or EINECS	SDS required Y/N	Sub Doc/ Test report Present Y/N
No	Description							
1	Accessory of kaleidoscope	1	PC	Paper	White	/	Y	Y
2	Accessory of kaleidoscope	1	PC	EVA	Colorful	24937-78-8	Y	Y
3	Accessory of kaleidoscope	1	PC	EVA	Colorful	24937-78-8	Y	Y
4	Accessory of kaleidoscope	1	PC	PS	Transparent	9003-53-6	Y	Y
5	Accessory of kaleidoscope	1	PC	PS	Transparent	9003-53-6	Y	Y
6	Accessory of kaleidoscope	1	PC	PP	Pink/green	9003-07-0	Y	Y
7	Kaleidoscope body	1	PC	Paper	Colorful	/	Y	Y
8	Kaleidoscope body	1	PC	SI	Green	7440-21-3	Y	Y



**Product Part (or Components) Description:**

**Product Parts Photo**



**3. Materials Safety Data Sheets**

Comment: MSDS of PP/PS/EVA/PAPER/PI materials are attached for reference.  
Please refer to ANNEX I

**4. Safety Assessments Reports**

Comment : ANNEX II

**5. Conformity assessment procedure**

Comment : ANNEX III

**6. EC declaration of conformity**

Comment : ANNEX IV

**7. Address of places of manufacture and storage**

**8. Documents submitted to notified body**

Comment: Not Applicable.

**9. Test report**

Comment: ANNEX V

**10. EC Type examination Certificate**

Comment: Not Applicable.

## ANNEX I

### MATERIAL SAFETY DATA SHEET

- Polypropylene(PP)

#### Part 1 Chemical product and company identification

Product Name	PP
Chemical Name	Polypropylene(isotaetic)
Formula (If Applicable)	(C <sub>3</sub> H <sub>6</sub> ) <sub>n</sub>
Product Type	Toy
Name of Manufacture	
Address of Manufacture	
Emergency phone number	

#### Part 2 Composition / information on ingredients

Composition and Percentage	Name of Composition	Concentration in %	CAS No.
	Polypropylene	99	9003-07-0
	Proprietary additives	1	

#### Part 3 Hazard identification

Product Hazard Ratings	Not applicable
Routes of Entry	contact, inhale, and swallow
Health Hazard	Non-toxic itself. Outcomes after heating could stimulate eyes and upper respiratory tract
Environmental Risk	Not biodegradable in soil

#### Part 4 First aid measures

Skin Contact	If molten material comes in contact with the skin, do not apply ice but cool under ice water or running stream of water. DO NOT attempt to remove the material from skin. Removal could result in severe tissue damage. Seek medical attention immediately.
Eye Contact	In case of contact with eyes, rinse immediately with plenty of water. Get medical aid if symptoms persist.
Inhalation	Move person to fresh air; if effects occur, consult a physician.
Ingestion	If swallowed, seek medical attention. May cause gastrointestinal blockage. Do not give laxatives. Do not induce vomiting unless directed to do so by medical personnel.
Notes to Physician	If burn is present, treat as any thermal burn, after decontamination. No specific antidote. Treatment of exposure should be directed at the control of symptoms and the clinical condition of the patient.

## Part 5 Fire fighting measures

Flammable Points and Limits	Not Applicable
Extinguishing Media	Water fog or fine spray. Dry chemical fire extinguishers. Carbon dioxide fire extinguishers. Foam.
Fire Hazard	Emits toxic fumes under fire conditions.
Special Fire Fighting Procedure	Keep people away. Isolate fire and deny unnecessary entry. Soak thoroughly with water to cool and prevent re-ignition. If material is molten, do not apply direct water stream. Use fine water spray or foam. Cool surroundings with water to localize fire zone. Hand held dry chemical or carbon dioxide extinguishers may be used for small fires.
Explosion Hazard	Pneumatic conveying and other mechanical handling operations can generate combustible dust. To reduce the potential for dust explosions, do not permit dust to accumulate. Dense smoke is emitted when burned without sufficient oxygen.

## Part 6 Accidental Release Measures

Personal Protection Measure	Not Applicable
Environmental Protection Measure	Prevent from entering into soil, ditches, sewers, waterways and/or groundwater.
Cleaning Method	Stop the leak if possible. Sweep up spilled material for use or disposal.

## Part 7 Handling and Storage Information.

Precautions for Handling	No smoking, open flames or sources of ignition in handling and storage area. Good housekeeping and controlling of dusts are necessary for safe handling of product. Avoid breathing process fumes. Use with adequate ventilation. When appropriate, unique handling information for containers can be found on the product label. Workers should be protected from the possibility of contact with molten resin. Do not get molten material in eyes, on skin or clothing. Pneumatic conveying and other mechanical handling operations can generate combustible dust. To reduce the potential for dust explosions, electrically bond and ground equipment and do not permit dust to accumulate. Dust can be ignited by static discharge.
Storage Condition	Store in a cool, ventilated warehouse. Keep away from strong oxidizing agents, fire and heat. Fit the warehouse out with fire-fighting equipment and container for leaking.

## Part 8 Exposure Control / Personal Protection.

Work / Hygiene Practice	The usual precautionary measures are to be adhered to when handling chemicals.
Exposure Limits	China MAC: 10; the former Soviet Union MAC: 10
Personal Protection (Eye,	<b>Respiratory:</b> Use an approved air-purifying respirator when

Respiratory, skin...)	<p>vapours are generated at increased temperatures or when dust or mist is present. Use the following CE approved air-purifying respirator: When dust/mist are present use a/an Particulate filter, type P2. When combinations of vapours, acids, or dusts/mists are present use a/an Organic vapour cartridge with a particulate pre-filter, type AP2.</p> <p><b>Eye/Face:</b> Use safety glasses. Safety glasses should be consistent with Directive 89/686/EEC Category 2. If there is a potential for exposure to particles which could cause eye discomfort, wear chemical goggles. Chemical goggles should be consistent with EN 166 or equivalent. If exposure causes eye discomfort, use a full-face respirator.</p> <p><b>Skin:</b> Wear heat-resistant protective gloves to withstand the temperature of the molten product. No requirement for cold material.</p> <p><b>Ingestion:</b> Use good personal hygiene. Do not consume or store food in the work area. Wash hands before smoking or eating.</p>
-----------------------	--

## Part 9 Physical and Chemical Properties

Appearance / State	Solid(Pellets or granules)
Odor	Odorless
PH Value	Not applicable
Solubility in water	Insoluble
Boiling Point	Not applicable
Melting Point	164~170°C
Density	0.91g/cm <sup>3</sup>
Evaporation Rate	Not applicable
Explosion Limit	Not applicable

## Part 10 Stability and Reactivity

General	This product is stable under normal conditions for shock, vibration, pressure or temperature.
Incompatibility	Strong oxidizer
Hazardous Decomposition Products	Decomposition products depend upon temperature, air supply and the presence of other materials. Processing may release fumes and other decomposition products. At temperatures exceeding melt temperatures, polymer fragments can be released. Fumes can be irritating. Decomposition products can include and are not limited to: Aldehydes. Alcohols. Organic acids. Decomposition products can include trace amounts of: Hydrocarbons.

## Part 11 Toxicological Information

Acute toxicity	Not applicable
Chronic toxicity	Not applicable

Carcinogenicity	Not applicable
-----------------	----------------

## Part 12 Ecological Information

Ecotoxicity	Not expected to be acutely toxic, but material in pellet or bead form may mechanically cause adverse effects if ingested by waterfowl or aquatic life.
Degradability	The product is not biodegradable
Bioconcentration	Not applicable

## Part 13 Disposal Method

Waste management	For uncontaminated material the disposal options include mechanical and chemical recycling or energy recovery. In some countries landfill is also allowed. For contaminated material the options remain the same, although additional evaluation is required. For all countries the disposal methods must be in compliance with national and provincial laws and any municipal or local by-laws. All disposal methods must be in compliance with the EU framework Directives 91/156/EEC, 91/689/EEC and their subsequent adaptations, as implemented in National Laws and Regulations, as well as EU Directives dealing with priority waste streams. Transboundary shipment of wastes must be in compliance with EU Regulation 259/93 and subsequent modifications.
------------------	---

## Part 14 Transport Information

Dangerous Article Code	Not applicable
UN Code	Not applicable
Classification of Packing	Z01
Packing Mark	Not applicable
Transportation Attention	Not applicable

## Part 15 Regulatory Information

Applicable Law or Regulation	This product is a polymer according to the definition in Directive 92/32/EEC (7th Amendment to Directive 67/548/EEC) and all of its starting materials and intentional additives are listed in the European Inventory of Existing Commercial Chemical Substances (EINECS) or in compliance with European (EU) chemical inventory requirements.
------------------------------	--

## Part 16 Other Information

Reference	Not applicable
-----------	----------------

Other Information	Not applicable
-------------------	----------------

- Polystyrene (PS)

### Part 1 Chemical product and company identification

Product Name	
Chemical Name	Polystyrene
Formula (If Applicable)	(C <sub>8</sub> H <sub>8</sub> ) <sub>n</sub>
Product Type	Toy
Name of Manufacture	
Address of Manufacture	
Emergency phone number	

### Part 2 Composition / information on ingredients

	Name of Composition	Concentration in %	CAS No.
Composition and Percentage	Polystyrene		9003-53-6
	Styrene		00100 - 42 - 5
	Pentane		109-66-0
	Hexabromocyclodecane		3194 - 55 - 6

### Part 3 Hazard identification

Product Hazard Ratings	B3
Routes of Entry	contact, inhale, and swallow
Health Hazard	Non-toxic itself. Processing may produce dust that could stimulate eyes, skin and upper respiratory tract
Environmental Risk	Not biodegradable in soil

### Part 4 First aid measures

Skin Contact	In case of pellets or powder, wash with water; In case of melt, wash affected skin area and clothing with plenty of soap and water, seek medical advice.
Eye Contact	In case of contact with eyes, rinse immediately with plenty of water for at least 15 minutes. Seek medical advice if any dust particles still remain. In case of gases evolving from melted resin of high temperature, flush with plenty of water for at least 15 minutes. Seek medical advice if necessary.
Inhalation	Move person to fresh air; if effects occur, consult a physician.
Ingestion	Induce vomiting. Rinse mouth with water. Seek medical advice if necessary.



### Part 5 Fire fighting measures

Flammable Points and Limits	Not Applicable
Extinguishing Media	Water fog or fine spray. Dry chemical fire extinguishers. Carbon dioxide fire extinguishers. Foam.
Fire Hazard	Emits toxic fumes under fire conditions.
Special Fire Fighting Procedure	Keep people away. Isolate fire and deny unnecessary entry. Soak thoroughly with water to cool and prevent re-ignition. If material is molten, do not apply direct water stream. Use fine water spray or foam. Cool surroundings with water to localize fire zone. Hand held dry chemical or carbon dioxide extinguishers may be used for small fires.
Explosion Hazard	If exposed to fire, high heat will be developed and heavy black smoke will result. During combustion, CO will be produced.

### Part 6 Accidental Release Measures

Personal Protection Measure	Not Applicable
Environmental Protection Measure	Prevent from entering into soil, ditches, sewers, waterways and/or groundwater.
Cleaning Method	Stop the leak if possible. Sweep up spilled material for use or disposal.

### Part 7 Handling and Storage Information.

Precautions for Handling	Prevent from fire around handling area. Maintain good house keeping standards to prevent accumulation of dust. To avoid dust explosion resulting from the existence of power, electrostatics eliminators and grounding should be fixed to such equipments as air transferring pipes, bag filters and hoppers. Use electrically conductive filters for bag filters.
Storage Condition	Store in a cool, ventilated warehouse. Keep away from strong oxidizing agents, fire and heat. Fit the warehouse out with fire-fighting equipment and container for leaking.

### Part 8 Exposure Control / Personal Protection.

Work / Hygiene Practice	The usual precautionary measures are to be adhered to when handling chemicals.
Exposure Limits	Not applicable
Personal Protection (Eye, Respiratory, skin...)	<p><b>Respiratory:</b> Use an approved air-purifying respirator when vapors are generated at increased temperatures or when dust or mist is present.</p> <p><b>Eye:</b> Wear safety glasses for general purpose. Wear chemical goggles for cleaning molding machines.</p> <p><b>Skin:</b> Wear heat-resistant protective gloves to withstand the temperature of the molten product. No requirement for cold material.</p> <p><b>Ingestion:</b> Use good personal hygiene. Do not consume or store food in the work area. Wash hands before smoking or eating.</p>

### Part 9 Physical and Chemical Properties



Appearance / State	Solid
Odor	Odorless
PH Value	Not applicable
Solubility in water	Insoluble
Boiling Point	Not applicable
Melting Point	180~280℃
Density	1.04~1.06g/cm <sup>3</sup>
Evaporation Rate	Not applicable
Explosion Limit	Not applicable

### Part 10 Stability and Reactivity

General	This product is stable under normal conditions.
Incompatibility	Strong oxidizing acid
Hazardous Decomposition Products	Carbon monoxide

### Part 11 Toxicological Information

Acute toxicity	<b>Pentane</b> : Narcosis and respiratory irritation caused by overexposure to vapors. <b>Effects of overexposure</b> : Overexposure to Pentane vapors : defatting of skin, irritation of eyes, dizziness and loss of coordination.
Chronic toxicity	Not applicable
Carcinogenicity	Not applicable

### Part 12 Ecological Information

Ecotoxicity	Not expected to be acutely toxic, but material in pellet or bead form may mechanically cause adverse effects if ingested by waterfowl or aquatic life.
Degradability	The product is not biodegradable
Bioconcentration	Not applicable

### Part 13 Disposal Method

Waste management	Controlled incineration or landfill according to local, state or national laws and regulations concerning health and pollution. Inadequate incineration may generate toxic gases such as CO
------------------	---

### Part 14 Transport Information

Dangerous Article Code	Not applicable
------------------------	----------------

UN Code	Not applicable
Classification of Packing	Not applicable
Packing Mark	Not applicable
Transportation Attention	Not applicable

### Part 15 Regulatory Information

Applicable Law or Regulation	This product is a polymer according to the definition in Directive 92/32/EEC (7th Amendment to Directive 67/548/EEC) and all of its starting materials and intentional additives are listed in the European Inventory of Existing Commercial Chemical Substances (EINECS) or in compliance with European (EU) chemical inventory requirements.
------------------------------	--

### Part 16 Other Information

Reference	Not applicable
Other Information	Not applicable

- ethylene-vinyl acetate copolymer (EVA)

### Part 1 Chemical product and company identification

Product Name	EVA
Chemical Name	ethylene-vinyl acetate copolymer
Formula (If Applicable)	$(C_2H_4)_x.(C_4H_6O_2)_y$
Product Type	Toy
Name of Manufacture	
Address of Manufacture	
Emergency phone number	

### Part 2 Composition / information on ingredients

Composition and Percentage	Name of Composition	Concentration in %	CAS No.
	ethylene-vinyl acetate copolymer	100	24937-78-8

### Part 3 Hazard identification

Product Hazard Ratings	S24/25
------------------------	--------

Routes of Entry	contact, inhale, and swallow
Health Hazard	Non-toxic itself. Stimulate eyes and skin.
Environmental Risk	Not biodegradable in soil

#### Part 4 First aid measures

Skin Contact	In case of pellets or powder, wash with water; In case of melt material, wash affected skin area and clothing with plenty of clean water, seek medical advice.
Eye Contact	Turn the upper eyelids up and then rinse them immediately with plenty of clean water for at least 15 minutes. Seek medical advice if any dust particles still remain.
Inhalation	Move person to fresh air; if effects occur, consult a physician.
Ingestion	Induce vomiting. Rinse mouth with water. Seek medical advice if necessary.

#### Part 5 Fire fighting measures

Flammable Points and Limits	Not Applicable
Extinguishing Media	Water fog or fine spray. Dry chemical fire extinguishers. Carbon dioxide fire extinguishers. Foam.
Fire Hazard	Emits toxic fumes when it is burning.
Special Fire Fighting Procedure	Keep people away. Isolate fire and deny unnecessary entry. Soak thoroughly with water to cool and prevent re-ignition. If material is molten, do not apply direct water stream. Use fine water spray or foam. Cool surroundings with water to localize fire zone. Hand held dry chemical or carbon dioxide extinguishers may be used for small fires.
Explosion Hazard	Powder and air can form the explosive mixture. When it reaches a certain concentration, explosion will cause by a spark.

#### Part 6 Accidental Release Measures

Personal Protection Measure	Wear fully protective suit. Avoid inhaling toxic and stimulating gas and the fumes produced after decomposition. Don't stand in the draught.
Environmental Protection Measure	Prevent from entering into soil, ditches, sewers, waterways and/or groundwater.
Cleaning Method	Keep away from fire. Stop the leak if possible. Sweep up spilled material for use or disposal.

#### Part 7 Handling and Storage Information.

Precautions for Handling	Operation area should be closed. The operator must go through specialized training, strictly compliant with operating procedures. Advise operators to wear self-absorption filter anti-dust masks, safety glasses, protective overalls and rubber gloves. Keep indoor ventilation. Away from fire, heat, oxidant, and alkali. Smoking is prohibited in the workplace. Be careful when packing and unloading. Avoid creating dust. Explosion-proof ventilation systems and equipment is necessary.
--------------------------	--

Storage Condition	Store in a cool, ventilated warehouse.Keep away from strong oxidizing agents,fire and heat.Fit the warehouse out with fire-fighting equipment and container for leaking.
-------------------	--

## Part 8 Exposure Control / Personal Protection.

Work / Hygiene Practice	Operation area should be closed. Keep indoor ventilation.
Exposure Limits	Not applicable
Personal Protection (Eye, Respiratory, skin...)	<b>Respiratory:</b> Use an approved air-purifying respirator when vapors are generated at increased temperatures or when dust or mist is present. <b>Eye:</b> Wear safety glasses for general purpose. <b>Skin:</b> Wear heat-resistant protective gloves to withstand the temperature of the molten product. <b>Ingestion:</b> Do not eat or store food in the work area. Wash hands before smoking or eating.

## Part 9 Physical and Chemical Properties

Appearance / State	Solid
Odor	Odorless
PH Value	Not applicable
Solubility in water	Insoluble
Boiling Point	170.6℃
Melting Point	99℃
relative density	0.92~0.98
Evaporation Pressure	0.714mmHg at 25℃
Flash point	68.2℃
Refractive index	1.480~1.510
Thermal decomposition	230~250℃
Brittleness temperature	<-60℃
Explosion Limit	Not applicable

## Part 10 Stability and Reactivity

General	This product is stable under normal conditions. Good ageing resistance.
Incompatibility	Strong oxidizing acid and alkali
Hazardous Decomposition Products	CO,CO <sub>2</sub>

## Part 11 Toxicological Information

Acute toxicity	Not applicable
Chronic toxicity	Not applicable

Carcinogenicity	Not applicable
-----------------	----------------

## Part 12 Ecological Information

Ecotoxicity	Not expected to be acutely toxic, but material in pellet or bead form may mechanically cause adverse effects if ingested by waterfowl or aquatic life.
Degradability	The product is not biodegradable
Bioconcentration	Not applicable

## Part 13 Disposal Method

Waste management	Controlled incineration or landfill according to local, state or national laws and regulations concerning health and pollution. Inadequate incineration may generate toxic gases such as CO
------------------	---

## Part 14 Transport Information

Dangerous Article Code	Not applicable
RTECS Code	000000041485
UN Code	Not applicable
Classification of Packing	Not applicable
Packing Mark	Not applicable
Transportation Attention	Not applicable

## Part 15 Regulatory Information

Applicable Law or Regulation	<Regulations on Safety Management of Hazardous Chemicals> Issued by the State Council of China in 17/2/1987
------------------------------	---

## Part 16 Other Information

Reference	Not applicable
Other Information	Not applicable

**Annex II**

<b>Safety Assessments to Toy Safety Directive 2009/48/EC</b>			<b>Date:</b>	2020-12-2
			<b>Version:</b>	1
<b>SECTION 1 – General Information</b>				
<b>Supplier name:</b>				
<b>Address:</b>				
<b>Contact person:</b>		<b>Supplier Tel:</b>		
<b>Email:</b>		<b>Supplier Fax:</b>		
<b>Manufacturer name:</b>				
<b>Address:</b>				
<b>Contact person:</b>				
<b>Email:</b>		<b>Manufacturer Fax:</b>		
<b>Other information:</b>				

<b>SECTION 2 - Description</b>			
<b>Item No.:</b>	TE11100199、631、10029		
<b>Product Name:</b>	Kaleidoscope		
<b>Materials used:</b>	Plastic/glass/paperboard		
<b>Age grading:</b>	3+	<b>Age labeling:</b>	3+
<b>Packaging description:</b>	OPP		
<b>Countries of Distribution:</b>	China	<b>Country of Manufacture:</b>	China
<b>Design Drawing:</b>	Line drawing/3D Diagram – Not available		

<p><b>Product Photo:</b></p>	
------------------------------	--

### SECTION 3 – Applicable Standards

<p><b>Product Category:</b></p>	<p>Kaleidoscope</p>
<p><b>Applicable standards:</b></p>	<p><u><b>Europe</b></u></p> <ul style="list-style-type: none"> <li>-EN 71-1:2014 – Mechanical and physical properties</li> <li>-EN 71-2:2011 + A1:2014 - – Flammability of Toys</li> <li>-EN 71-3:2013 + A1:2014 - – Migration of Certain Elements</li> </ul>

### SECTION 4 – Product Design Evaluation(Refer to appendix A for detail)

<p><b>Compliance Findings:</b></p>	<p><u><b>Europe</b></u></p> <p>The product should comply with the requirements for children over 36 months based on the play feature, construction and design according to EN71-1</p> <p>Non-conformity was not identified during this review, but the following requirements should be noted for the compliance.</p> <ul style="list-style-type: none"> <li>-No sharp point/edge can be found(except functional sharp edge/point).</li> <li>-Mold flash shall not be present.</li> </ul>
<p><b>Risk Assessment Finding:</b></p>	
<p><b>Physical and Mechanical:</b></p>	<p>Physical and mechanical hazards would be addressed by EN71 part 1</p> <p>The risk of Physical and mechanical hazards is reduced.</p> <p><u><b>Laceration-low risk</b></u></p> <p>The corners of the components are sharp, which may cut/puncture the skin of children when they construct the toy. This risk can be reduced by smoothing the corners.</p>

	<p><b><u>Flexible plastic sheeting-high risk</u></b></p> <p>The flexible plastic sheeting thickness is less than 0.038 mm choking hazards in pack. Adding warning on packing" Warning: this bag is not a toy – please keep away from children to avoid danger of suffocation." Could reduce this hazard slightly.</p>
<b>Flammability:</b>	The toy can comply with the requirement according to the EN71 part 2.The risk of flammability hazard is reduced.
<b>Chemical:</b>	<p>Chemical hazards would be addressed by EN71 part 3 and REACH.</p> <p>The risk of Chemical hazard is reduced.</p> <p>Heavy elements content and raw materials should be controlled, especially lead in paint and phthalates.</p>
<b>Hygiene:</b>	Toy must to be designed in such a way that to meet the hygiene and clear requirement in order to avoid and risk of infection,sickness and contamination of over 36 months toys.
<b>Radioactivity:</b>	Toy shall comply with all relevant measures adopted under chapter III of the treaty establishing the European Atomic Community.Toys should be free from radioactive materials.

<b>Critical Manufacturing Concerns:</b>	<p>Heavy element content of incoming paints and raw materials should be controlled,especially lead in paint and Phthalates,which are involved large number of US CPSC and REPAX recall cases.</p> <p>Mould flash and process burrs should be well controlled throughout production in order to minimize the laceration hazard from sharp points of edges on the items.</p> <p>Moulding quality of plastics hardness and property should be well controlled to ensure strengthen of the shape and housing steady.</p>
<b>Other comments:</b>	-

#### SECTION 5 – Labelling Assessment

<b>CE Mark:</b>	<p>YES for EU</p> <p>Note:For the new Toy Directive the CE mark must be visible at point of sale.</p>
<b>Labeling on Item:</b>	<p>All texts required shall be written in the official language of the country in which the toy is to be sold.</p> <p><b><u>Conclusion &amp; Finding:</u></b></p> <p><b>The labeling on item can not comply with the requirement regulated in New Toys Directive – 2009/48/EC and detailed in EN71-1</b></p>



	<p><b>Following information was not find at time of assessment:</b></p> <p><b><u>EU</u></b>  <b>New Toys Safety Directive (2009/48/EC)</b>  The following information can be placed on the packaging/instruction only if it is not technically or economically feasible to place it on the toys itself.  - Manufacturer name and address</p>
<b>Labelling on the packaging:</b>	<p>All next required shall be written in official language of the country in which the toy in to be sold.  CE Mark and age related warnings should be present on the toy or packing as long as the are visible at the point of sale,along with a description of the hazard/harm either on the item/packaging or in a leaflet.</p> <p><b><u>Conclusion &amp; Finding:</u></b>  <b>The labeling on packaging can not comply with the requirement regulated in New Toys Directive – 2009/48/EC and detailed in EN71-1</b>  <b>Following information was not find at time of assessment:</b></p> <p><b><u>EU</u></b>  <b>New Toys Safety Directive (2009/48/EC)</b>  The following information can be placed on the packaging/instruction if the toy is technically or economically not possible.  - Manufacturer name and address</p>
<b>Instructions:</b>	

#### SECTION 6 – Relevant Date Analysis Findings

<b>EU RAPEX Recalls:</b>	--
--------------------------	----

#### PRODUCT REVIEWER:

<b>Name:</b>		<b>Positing:</b>	Product engineer
--------------	--	------------------	------------------

<b>Date:</b>	<b>2020-12-2</b>	<b>Signature: (Company stamp)</b>	
<b>CONFIRMED BY:</b>			
<b>Name:</b>	<b>JESSICA</b>	<b>Position:</b>	<b>Manager</b>
<b>Date:</b>	<b>2020-12-2</b>	<b>Signature: (Company stamp)</b>	

Appendix A-Mechanical and Physical Assessment					
Hazard		Remark		Hazard Property	Typical injury scenario
Physical/ Mechanical	Asphyxiation	Airway Obstruction	Aspiration, choking, ingestion and insertion into nose	Product is or contains small part	Person (child) swallows small part, the part gets stuck in larynx and blocks airways
		Suffocation	Mechanical resistance to air flow or increase of CO <sub>2</sub> , (e.g. external blocking of mouth and nose, chest compression preventing breathing, or restrained in a closed space).	Product is impermeable to air	Product covers mouth and/or nose of a person (typically a child), or covers internal airway
		Strangulation	External constriction in the neck area causing blockage of the airway or circulatory system	Gap or opening between elements	Person puts a limb or body in opening and is trapped with finger, arm, neck, head, body or clothing; injury occurs due to gravity or movement
		Submersion/ Drowning	Lack of oxygen caused by submersion into liquid or other substance		
	Kinetic Energy	Impact	Struck by/against moving objects (e.g. in the face/eye or body).	Moving product	Person in the line of movement of the product is being hit by the product or run over
				Flying objects	Person is hit by the flying object and depending on the energy sustains injuries
				Elastic element or spring	Elastic element or spring under tension is suddenly released; person in the line of movement is hit by the product
		Falls	e.g. fall on same level from slipping/tripping/ collision, fall on/from stairs/steps/ elevated surface, fall from/ out of building/ structure, fall into hole or other opening in surface, etc.	Low mechanical stability,	Person in the line of movement of the product is being hit by the product or run over
				Low mechanical strength	Person is hit by the flying object and depending on the energy sustains injuries
				High position of user	Elastic element or spring under tension is suddenly released; person in the line of movement is hit by the product
				Product is obstacle	Product tips; person on top of product falls from height, or person near product is hit by the product; electrical product tips, breaks and gives access to live parts, or continues to work heating nearby surfaces.
				Slippery surface	Person walks on surface, slips and falls hitting the floor
				Acceleration	Person on the accelerating product loses balance, has no support to hold on to and falls with some speed
				Pressurized liquid or gas, or vacuum	Liquid or gas under pressure is suddenly released; person in the vicinity is hit; or implosion of the product produces flying objects
	Mechanical	Laceration	Cut/tear by sharp edges or sharp points	Sharp edge	Person touches sharp edge; this lacerates skin or cuts through tissues
		Puncture	Puncture by sharp point(s), projection(s), or spike(s) to external or internal body parts (e.g. ear drum)	Sharp corner or point	Person hits sharp corner or is hit by moving sharp object; this causes a puncture or penetration injury
		Abrasion	Damage to skin	Rough surface	
		Entrapment	Entrapment of body part into object (e.g. finger, hand, head)	Gap or opening between elements	
				Rotating parts Rotating parts close to one another	
		Pinching/ Crushing/ Amputation	Pinch/crush between moving surfaces or from tourniquet action	Parts moving against one another	Person puts a body part between the moving parts while they move together; the body part gets trapped and put under pressure (crushed)
		Foreign Body	Foreign body into any non-airway body part(s) (e.g. eye, ear, skin)	Sharp corner or point	Person hits sharp corner or is hit by moving sharp object; this causes a puncture or penetration injury

		Strain	Acute overexertion of muscles		
Physical/ Other	Other	Vibration/ Noise	Include sound-induced hearing loss (include loss of hearing sensitivity and immediate physical damage, e.g. ruptured eardrums) and the blockage of blood vessels from the use of vibrating tools	Vibration	Person holding the product loses balance and falls; or prolonged contact with vibrating product causes neurological disorders, osteo-articular disorder, trauma of the spine,vascular disorder
				Noise	Person is exposed to noise from the product. Tinnitus and hearing loss may occur depending on sound level and distance
		Interference with Safe Activity	Include any condition that reduce normal senses/ functions, such as vision, hearing, walking, etc.		
		Magnets	Intestinal perforations if swallowed		
	Radiation	High Intensity visible Light	e.g. high intensity lights, lasers, LEDs		
		Ultraviolet Light	Either from the sun or man-made (e.g. UV lamps, electric arc welding, plasma torches, high-intensity lights, sources of 'black light', and certain types of lasers, etc.) Can cause thermal or photochemical injury.	Ultraviolet radiation, laser	Skin or eyes of a person are exposed to radiation emitted by the product
		Infrared Radiation			
		Microwave Radiation	Neurological (brain) damage,Leukaemia (children)	High intensity electromagnetic field (EMF) source; low frequency or high frequency (microwave)	Person is close to the electromagnetic field (EMF) source, body (central nervous system) is exposed
		Ionizing Radiation	Can be caused by x rays, gamma rays, alpha particles, beta particles, neutrons, and other nuclear particles.		
	Thermal Effect	Flammability and Fires	e.g. conflagration, ignition of clothing or other flammable material.	Open flamens	A person near the flames may sustain burns, possibly after clothing catches fire
		Thermal Bum	Burn by hot object/appliance/surface, or by fire/flame	Heat production	Product becomes hot; a person touching it may sustain burns; or the product may emit molten particles.steam etc. that hits a person
				Hot surfaces	Person does not recognize the hot surface and touches it; the person sustains burns
				Flammable substances	Person is near the flammable substance; an ignition source sets the substance to fire; this causes injuries to the person
				Explosive mixtures	Person is near the explosive mixture; an Ignition source causes an explosion; the person is hit by the shock wave, burning material and/or flames
				Ignition sources	The ignition source causes a fire; a person is injured by flames, or intoxicated by gases from the house fire

				Overheating	Product overheats; fire explosion
--	--	--	--	-------------	-----------------------------------

		Scalding Burn	Burn by hot liquid/steam/gas.	Hot liquids	Person handling a container of liquid spills some of it; the liquid falls on the skin and causes scalds
				Hot gasses	Person breathes in the hot gasses emitted from a product; this causes lung burn; or prolonged exposure to hot air causes dehydration
		Hypothermia/ Cold Burn	Include but is not limited to frostbite or cryogenic burns.	Cold surface	Person does not recognize the cold surface and touches it; the person sustains frostbite
	Electrical	Electrical Shock	The stimulation of the body's nervous system by an electric current or discharge.	High/low voltage	Person can touch part of the product that is at high voltage; the person receives an electric shock and may be electrocute
		Electrical Fire	Include but not limited to ignition of combustibles caused by sparks and arcs or heat from electrical components.		
		Electrical Burn	Burn caused by an electric current passing through or near the body		
		Electrical Explosion	Include but is not limited to explosion from short circuiting, or from the presence of liquid or its contaminants which disassociate violently when current passes through		
	Chemical	Toxic solid or fluid	Person ingests substance from product, e.g. by mouth; and/or substance gets onto skin person aspirates (breathes in) solid, fluid or emetic mass (pulmonary aspiration)	Acute poisoning; irritation, dermatitis Acute poisoning in lungs (aspiration pneumonia);infection	
		Toxic gas, vapor or dust	Person inhales substance from product; and/or substance gets onto skin	Acute poisoning in lungs; irritation, dermatitis	
		Sensitizing substance	Person ingests substance from product, e.g. by mouth; and/or substance gets onto skin; and/or person inhales gas, vapor or dust	Sensitization; allergic reaction	
		Irritating or corrosive solid or fluid	Person ingests substance from product, e.g. by mouth; and/or substance gets onto skin or in eyes	Irritation, dermatitis; skin burn; eye injury, foreign body in eye	
		Irritating or corrosive gas or vapor	Person inhales substance from product; and/or substance gets onto skin or in eyes	Irritation, dermatitis; skin burn; acute poisoning or corrosive effect in lungs or in eyes	
		CMR substance	Person ingests substance from product, e.g., by mouth; and/or substance gets onto skin; and/or person inhales substance as gas, vapor or dust	Cancer, mutation, reproductive toxicity	
	Other Chemical Effects	Chemical Explosion	Reaction of energetic substances		

### ANNEX III

## **Conformity Assessment Procedure**

Company:

Product Name: Kaleidoscope

Product Description: Kaleidoscope

Picture of the Toy:



### **First party conformity assessment harmonized standards used:**

- EN 71-1:2014 – Mechanical and physical properties
- EN 71-2:2011 + A1:2014 - – Flammability of Toys
- EN 71-3:2013 + A1:2014 - – Migration of Certain Elements

**Third party verification notified body used: --**

**Internal production control in place: --**

**Approved by: Jenny**

**Date: 2020-12-2**

**ANNEX IV**

**EC DECLARATION OF CONFORMITY**

**Company:**

**Address:**

**Product Identification**

Item No.: TE11100199、631、10029

Product Name: Kaleidoscope

Product Picture:



**Is in conformity with the standard(s):**

- EN 71-1:2014 – Mechanical and physical properties
- EN 71-2:2011 + A1:2014 - – Flammability of Toys
- EN 71-3:2013 + A1:2014 - – Migration of Certain Elements

**The declaration is the sole responsibility of the manufacturer**

**Date:** 2020-12-2

**Signature:**





Doc No: ZL20201202025

万田检测技术服务有限公司  
**Vantin Testing Technology Service Co.,Ltd**

Date : 2020-12-2

Page 30 of 30

\*\*\*\*\* End of Documentation \*\*\*\*\*